



**Certificate of Analysis**  
Compliance Test

**Client Information:**

**AMERICAN SOFTGELS INC**  
100 STATION ST  
LOYALHANNA, PA 15661

Batch # 507001  
Batch Date: 2025-10-15  
Extracted From: Hemp

Test Reg State: Colorado

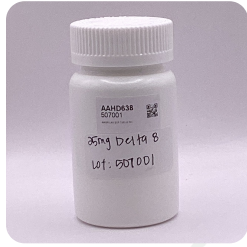
Production Facility: American Softgels, Inc.  
Production Date: 2025-10-15

Order # AME251015-010003  
Order Date: 2025-10-15  
Sample # AAHD638

Sampling Date: 2025-10-23  
Lab Batch Date: 2025-10-23  
Completion Date: 2025-10-29

Initial Gross Weight: 75.100 g  
Net Weight: 0.445 g

Number of Units: 1  
Net Weight per Unit: 445.000 mg  
Sampling Method: MSP 7.3.1



Product Image

Staphylococcus Aureus  
**Passed**

Potency  
**Tested**

Terpenes  
**Tested**

Heavy Metals  
**Passed**

Mycotoxins  
**Passed**

Pesticides  
**Passed**

Residual Solvents  
**Passed**

Pathogenic Microbiology  
**Passed**

Microbiology Petrifilm  
**Passed**

**Potency 25 (LCUV)**  
Specimen Weight: 101.980 mg

**Tested**  
SOP13.001 (LCUV)

Analyte	Dilution (1:n)	LOD (mg/g)	LOQ (%)	Result (mg/g)	(%)
Delta-8 THC	10.000	2.60E-5	0.015	58.9700	5.8970
CBN	10.000	1.40E-5	0.015	0.4000	0.0400
Delta-8 THCV	10.000	4.00E-5	0.015	0.3700	0.0370
CBC	10.000	1.80E-5	0.015	<LOQ	<LOQ
CBCA	10.000	1.07E-4	0.015	<LOQ	<LOQ
CBD	10.000	5.40E-5	0.015	<LOQ	<LOQ
CBDA	10.000	1.00E-5	0.015	<LOQ	<LOQ
CBDV	10.000	6.50E-5	0.015	<LOQ	<LOQ
CBDVA	10.000	1.40E-5	0.015	<LOQ	<LOQ
CBG	10.000	2.48E-4	0.015	<LOQ	<LOQ
CBGA	10.000	8.00E-5	0.015	<LOQ	<LOQ
CBL	10.000	3.50E-5	0.015	<LOQ	<LOQ
CBNA	10.000	9.50E-5	0.015	<LOQ	<LOQ
CBT	10.000	2.00E-4	0.015	<LOQ	<LOQ
Delta-8 THC-O Acetate	10.000	2.70E-5	0.025	<LOQ	<LOQ
Delta-9 THC	10.000	1.30E-5	0.015	<LOQ	<LOQ
Delta-9 THC-O Acetate	10.000	7.70E-5	0.025	<LOQ	<LOQ
Delta8-THCP	10.000	3.75E-4	0.015	<LOQ	<LOQ
Delta9-THCP	10.000	1.17E-5	0.012	<LOQ	<LOQ
Exo-THC	10.000	2.30E-4	0.015	<LOQ	<LOQ
THCA-A	10.000	3.20E-5	0.015	<LOQ	<LOQ
THCB	10.000	1.80E-4	0.0163	<LOQ	<LOQ
THCH	10.000	3.50E-4	0.0163	<LOQ	<LOQ
THCV	10.000	7.00E-6	0.015	<LOQ	<LOQ
THCVA	10.000	4.70E-5	0.015	<LOQ	<LOQ
Total Active CBD	10.000			<LOQ	<LOQ
Total Active THC	10.000			<LOQ	<LOQ

**Potency Summary**

Total Active THC None Detected	Total Active CBD None Detected
Total CBG None Detected	Total CBN 0.040% 0.178 mg
Total Cannabinoids 5.974% 26.584 mg	Total DELTA-8-THC 5.897% 26.242 mg

**Terpenes Summary**

Analyte	Result (mg/g)	(%)
<b>Total Terpenes: 0.000%</b>		

Detailed Terpenes Analysis is on the following page

Aixia Sun Lab Director/Principal Scientist  
D.H.Sc., M.Sc., B.Sc., MT (AAB)



Definitions and Abbreviations used in this report: Total Active CBD = CBD + (CBD-A \* 0.877), \*Total CBDV = CBDV + (CBDVA \* 0.867), Total Active THC = THCA-A \* 0.877 + Delta 9 THC, Total THC = THCV + (THCVA \* 0.87), CBG Total = (CBGA \* 0.878) + CBG, CBN Total = (CBNA \* 0.876) + CBN, Total CBC = CBC + (CBCA \* 0.877), Total THC-O-Acetate = Delta 8 THC-O-Acetate + Delta 9 THC-O-Acetate, Total THCP = Delta8-THCP + Delta9-THCP, Total Cannabinoids = Total percentage of cannabinoids within the sample. (mg/ml) = Milligrams per Milliliter, LOQ = Limit of Quantitation, LOD = Limit of Detection, Dilution = Dilution Factor, (ppb) = Parts per Billion, (%) = Percent, (cfu/g) = Colony Forming Unit per Gram, (µg/g) = Microgram per Gram, (ppm) = Parts per Million, (µg/g) = (µg/g), (aw) = Water Activity, (mg/kg) = Milligram per Kilogram. ACS uses simple acceptance criteria. Passed - Analyte/microbe is not detected or is at the level below the action limit per CO rule 6 CCR 1010-21. Failed - Analyte/microbe is at the level that equal or above the action limit per CO rule 6 CCR 1010-21 Client supplied the net weight of mg The results apply to the sample as received.  
This report shall not be reproduced, without written approval, from ACS Laboratory. The results of this report relate only to the material or product analyzed. Test results are confidential unless explicitly waived otherwise. ACS Laboratory is accredited to the ISO/IEC 17025:2017 Standard. The tests and/or calibrations marked with an "\*" are not ISO/IEC 17025:2017 accredited test results.



**Certificate of Analysis**  
Compliance Test

**Client Information:**

<b>AMERICAN SOFTGELS INC</b> 100 STATION ST LOYALHANNA, PA 15661	Batch # 507001 Batch Date: 2025-10-15 Extracted From: Hemp	Test Reg State: Colorado	Production Facility: American Softgels, Inc. Production Date: 2025-10-15
Order # AME251015-010003 Order Date: 2025-10-15 Sample # AAHD638	Sampling Date: 2025-10-23 Lab Batch Date: 2025-10-23 Completion Date: 2025-10-29	Initial Gross Weight: 75.100 g Net Weight: 0.445 g	Number of Units: 1 Net Weight per Unit: 445.000 mg Sampling Method: MSP 7.3.1

**Terpenes**  
Specimen Weight: 504.350 mg  
Dilution Factor: 200.000

**Tested**  
SOP13.045 (GC-MS  
/GC (Liquid  
Injection))

Analyte	LOQ (%)	Result (mg/g)	(%)	Analyte	LOQ (%)	Result (mg/g)	(%)
(+)-Cedrol	0.002	<LOQ		Fenchyl Alcohol	0.002	<LOQ	
(R)-(+)-Limonene	0.002	<LOQ		Gamma-Terpinene	0.002	<LOQ	
3-Carene	0.002	<LOQ		Geraniol	0.002	<LOQ	
alpha-Bisabolol	0.002	<LOQ		Geranyl acetate	0.002	<LOQ	
alpha-Cedrene	0.002	<LOQ		Guaiol	0.002	<LOQ	
alpha-Humulene	0.002	<LOQ		Hexahydrothymol	0.002	<LOQ	
alpha-Phellandrene	0.002	<LOQ		Isoborneol	0.002	<LOQ	
alpha-Pinene	0.002	<LOQ		Isopulegol	0.002	<LOQ	
alpha-Terpinene	0.002	<LOQ		Linalool	0.002	<LOQ	
beta-Myrcene	0.002	<LOQ		Nerol	0.002	<LOQ	
beta-Pinene	0.002	<LOQ		Ocimene	0.00033	<LOQ	
Borneol	0.004	<LOQ		Pulegone	0.002	<LOQ	
Camphene	0.002	<LOQ		Sabinene	0.002	<LOQ	
Camphors	0.006	<LOQ		Sabinene Hydrate	0.002	<LOQ	
Caryophyllene oxide	0.002	<LOQ		Terpinolene	0.002	<LOQ	
cis-Nerolidol	0.002	<LOQ		Total Terpeneol	0.00126	<LOQ	
Eucalyptol	0.002	<LOQ		trans-			
Farnesene	0.002	<LOQ		Caryophyllene	0.002	<LOQ	
Fenchone	0.002	<LOQ		trans-Nerolidol	0.002	<LOQ	
				Valencene	0.002	<LOQ	

**Staphylococcus Aureus**  
Specimen Weight: 246.800 mg  
Dilution Factor: 1.000

**Passed**  
SOP13.029  
(qPCR)

Analyte	Action Limit (cfu/g)	Result
Staphylococcus aureus	1	Absence

**Pathogenic Microbiology - SE (MicroArray) - CO**  
Specimen Weight: 25.270 g

**Passed**  
SOP13.019 (Micro  
Array)

Analyte	Action Limit (cfu/g)	Result (cfu/g)	Analyte	Action Limit (cfu/g)	Result (cfu/g)
Salmonella	25	Absence in 25g	STEC	25	Absence in 25g

*Aixia Sun*  
Aixia Sun Lab Director/Principal Scientist  
D.H.Sc., M.Sc., B.Sc., MT (AAB)

Definitions are found on page 1

This report shall not be reproduced, without written approval, from ACS Laboratory. The results of this report relate only to the material or product analyzed. Test results are confidential unless explicitly waived otherwise. ACS Laboratory is accredited to the ISO/IEC 17025:2017 Standard. The tests and/or calibrations marked with an "\*" are not ISO/IEC 17025:2017 accredited test results.





**Certificate of Analysis**  
Compliance Test

**Client Information:**

**AMERICAN SOFTGELS INC**  
100 STATION ST  
LOYALHANNA, PA 15661

Batch # 507001  
Batch Date: 2025-10-15  
Extracted From: Hemp

Test Reg State: Colorado

Production Facility: American Softgels, Inc.  
Production Date: 2025-10-15

Order # AME251015-010003  
Order Date: 2025-10-15  
Sample # AAHD638

Sampling Date: 2025-10-23  
Lab Batch Date: 2025-10-23  
Completion Date: 2025-10-29

Initial Gross Weight: 75.100 g  
Net Weight: 0.445 g


Number of Units: 1  
Net Weight per Unit: 445.000 mg  
Sampling Method: MSP 7.3.1

**Microbiology (Petrifilm) - CO**  
Specimen Weight: 994.000 mg

**Passed**  
SOP13.003  
(Petrifilm)

Dilution Factor: 1.000

Analyte	LOQ (cfu/g)	Action Limit (cfu/g)	Result (cfu/g)	Analyte	LOQ (cfu/g)	Action Limit (cfu/g)	Result (cfu/g)
Aerobic Bacteria	10	10000	<10	Yeast/Mold	10	1000	<10
Total Coliform	10	100	<10				

  
Aixia Sun Lab Director/Principal Scientist  
D.H.Sc., M.Sc., B.Sc., MT (AAB)

Definitions are found on page 1

This report shall not be reproduced, without written approval, from ACS Laboratory. The results of this report relate only to the material or product analyzed. Test results are confidential unless explicitly waived otherwise. ACS Laboratory is accredited to the ISO/IEC 17025:2017 Standard. The tests and/or calibrations marked with an "\*" are not ISO/IEC 17025:2017 accredited test results.





**Certificate of Analysis**  
Compliance Test

**Client Information:**

<b>AMERICAN SOFTGELS INC</b> 100 STATION ST LOYALHANNA, PA 15661	Batch # 507001 Batch Date: 2025-10-15 Extracted From: Hemp	Test Reg State: Colorado	Production Facility: American Softgels, Inc. Production Date: 2025-10-15
Order # AME251015-010003 Order Date: 2025-10-15 Sample # AAHD638	Sampling Date: 2025-10-23 Lab Batch Date: 2025-10-23 Completion Date: 2025-10-29	Initial Gross Weight: 75.100 g Net Weight: 0.445 g	Number of Units: 1 Net Weight per Unit: 445.000 mg Sampling Method: MSP 7.3.1

**Mycotoxins - CO** **Passed**  
Specimen Weight: 596.000 mg **SOP14.003**  
**(GCMS/LCMS)**

Dilution Factor: 2.520

Analyte	LOD (ppb)	LOQ (ppb)	Action Limit (ppb)	Result (ppb)	Analyte	LOD (ppb)	LOQ (ppb)	Action Limit (ppb)	Result (ppb)
Aflatoxin B1	3.7250E-1	2.5	5	<LOQ	Ochratoxin A	1.8997E-1	3.5	5	<LOQ
Aflatoxin Total		2.5	20	<LOQ					

**Heavy Metals - CO** **Passed**  
Specimen Weight: 246.600 mg **SOP13.048 (ICP-MS)**

Dilution Factor: 202.758

Analyte	LOD (ppb)	LOQ (ppb)	Action Limit (ppb)	Result (ppb)	Analyte	LOD (ppb)	LOQ (ppb)	Action Limit (ppb)	Result (ppb)
Arsenic (As)	4.83	100	1500	<LOQ	Lead (Pb)	0.58	100	500	<LOQ
Cadmium (Cd)	0.64	100	500	<LOQ	Mercury (Hg)	11.76	100	1500	<LOQ

**Residual Solvents - CO** **Passed**  
Specimen Weight: 17.100 mg **SOP13.039, SOP13.056**  
**(GCMS-HS, GCMS- (HS))**

Dilution Factor: 1.000

Analyte	LOD (ppm)	LOQ (ppm)	Action Limit (ppm)	Result (ppm)	Analyte	LOD (ppm)	LOQ (ppm)	Action Limit (ppm)	Result (ppm)
1-Butanol	0.010	0.5	1000	<LOQ	Heptane	0.002	0.5	1000	<LOQ
1-Pentanol	0.010	0.5	1000	<LOQ	Hexane	0.001	0.5	10	<LOQ
1-Propanol	0.000	0.5	1000	<LOQ	Isobutyl acetate	1.067	4	1000	<LOQ
2-Butanol	0.000	0.5	1000	<LOQ	Isopropyl acetate	0.001	0.5	1000	<LOQ
2-Butanone	0.009	0.5	1000	<LOQ	Isopropyl alcohol	0.111	0.5	1000	47.0
2-Methyl-1-propanol	1.004	4	1000	<LOQ	Methanol	0.002	0.5	100	<LOQ
3-methyl-1-butanol	0.696	4	1000	<LOQ	Methyl acetate	1.116	4	1000	<LOQ
Acetic acid	0.712	4	1000	<LOQ	Pentane	0.017	0.5	1000	<LOQ
Acetone	0.001	0.5	1000	<LOQ	Propane	0.085	0.5	100	<LOQ
Anisole	1.042	4	1000	<LOQ	Propyl acetate	1.302	4	1000	<LOQ
Benzene	0.000	0.5	2	<LOQ	tert-Butyl methyl ether	0.595	4	1000	<LOQ
Butanes	0.003	0.5	100	<LOQ	Toluene	0.000	0.5	20	<LOQ
Butyl acetate	0.686	4	1000	<LOQ	Total Xylenes	0.000	2.92	40	<LOQ
Ethanol	0.000	0.5	NA	<LOQ	Triethylamine	0.891	4	100	<LOQ
Ethyl Acetate	0.002	0.5	1000	<LOQ					

*Aixia Sun*  
Aixia Sun Lab Director/Principal Scientist  
D.H.Sc., M.Sc., B.Sc., MT (AAB)

Definitions are found on page 1

This report shall not be reproduced, without written approval, from ACS Laboratory. The results of this report relate only to the material or product analyzed. Test results are confidential unless explicitly waived otherwise. ACS Laboratory is accredited to the ISO/IEC 17025:2017 Standard. The tests and/or calibrations marked with an "\*" are not ISO/IEC 17025:2017 accredited test results.





**Certificate of Analysis**  
Compliance Test

**Client Information:**

<b>AMERICAN SOFTGELS INC</b> 100 STATION ST LOYALHANNA, PA 15661	Batch # 507001 Batch Date: 2025-10-15 Extracted From: Hemp	Test Reg State: Colorado	Production Facility: American Softgels, Inc. Production Date: 2025-10-15
Order # AME251015-010003 Order Date: 2025-10-15 Sample # AAHD638	Sampling Date: 2025-10-23 Lab Batch Date: 2025-10-23 Completion Date: 2025-10-29	Initial Gross Weight: 75.100 g Net Weight: 0.445 g	Number of Units: 1 Net Weight per Unit: 445.000 mg Sampling Method: MSP 7.3.1

**Pesticides - CO**  
Specimen Weight: 596.000 mg

**Passed**  
SOP14.003 (GCMS/LCMS)

Dilution Factor: 2.520

Analyte	LOD (ppb)	LOQ (ppb)	Action Limit (ppb)	Result (ppb)	Analyte	LOD (ppb)	LOQ (ppb)	Action Limit (ppb)	Result (ppb)	Analyte	LOD (ppb)	LOQ (ppb)	Action Limit (ppb)	Result (ppb)
Abamectin	3.1800E-4	250	250	<LOQ	Dodemorph	6.4700E-12	50	50	<LOQ	Naled	5.8500E-6	100	100	<LOQ
Acephate	3.9632E-2	50	50	<LOQ	Endosulfan sulfate	8.8376E-1	2500	2500	<LOQ	Novaluron	2.0500E-4	25	25	<LOQ
Acequinocyl	5.7646E-2	30	30	<LOQ	Endosulfan-alpha	1.2220E+1	2500	2500	<LOQ	Oxamyl	1.6190E-3	1500	1500	<LOQ
Acetamiprid	3.3800E-10	50	50	<LOQ	Endosulfan-beta	2.2760E+1	2500	2500	<LOQ	Paclobotrazol	6.9300E-8	10	10	<LOQ
Aldicarb	2.2744E-2	500	500	<LOQ	Ethoprophos	1.5900E-5	10	10	<LOQ	Pentachloronitrobenzen (Quintozene)	4.3900E+0	20	20	<LOQ
Allethrin	4.7244E-1	100	100	<LOQ	Etofenprox	8.3050E-3	50	50	<LOQ	Permethrin	2.2089E-2	500	500	<LOQ
Atrazine	3.7992E-1	25	25	<LOQ	Etoxazole	8.3558E-1	20	20	<LOQ	Phenothrin	2.1200E-7	50	50	<LOQ
Azadirachtin	3.0710E-3	500	500	<LOQ	Etridiazole	4.0200E+0	150	150	<LOQ	Phosmet	9.6150E-3	20	20	<LOQ
Azoxystrobin	1.3247E-2	10	10	<LOQ	Fenhexamid	1.0947E+0	125	125	<LOQ	Piperonylbutoxide	1.3400E-7	1250	1250	<LOQ
Benzovindiflupyr	1.2567E-2	10	10	<LOQ	Fenoxycarb	3.4507E-1	10	10	<LOQ	Pirimicarb	5.6600E-5	10	10	<LOQ
Bifenazate	2.1700E-8	10	10	<LOQ	Fenpyroximate	4.4800E-7	20	20	<LOQ	Prallethrin	1.6732E-1	50	50	<LOQ
Bifenthrin	8.4200E-4	1000	1000	<LOQ	Fensulfothion	7.9400E-4	10	10	<LOQ	Propiconazole	2.1300E-14	100	100	<LOQ
Boscalid	4.3300E-6	10	10	<LOQ	Fenthion	4.9113E+0	10	10	<LOQ	Propoxur	3.5081E-1	10	10	<LOQ
Buprofezin	1.6600E-9	20	20	<LOQ	Fenvalerate	5.9775E-1	100	100	<LOQ	Pyraclostrobin	5.3100E-7	10	10	<LOQ
Carbaryl	1.3800E-5	25	25	<LOQ	Fipronil	2.8847E-2	10	10	<LOQ	Pyrethrins	6.2350E-3	50	50	<LOQ
Carbofuran	7.7600E-5	10	10	<LOQ	Flonicamid	6.9733E-2	25	25	<LOQ	Pyridaben	8.7500E-15	20	20	<LOQ
Chlorantraniliprole	1.3559E-1	20	20	<LOQ	Fludioxonil	1.3402E-2	10	10	<LOQ	Pyriproxyfen	9.5800E-5	10	10	<LOQ
Chlorfenapyr	1.5370E+1	1500	1500	<LOQ	Fluopyram	1.1200E-9	10	10	<LOQ	Resmethrin	6.8013E-2	50	50	<LOQ
Chlorpyrifos	9.0900E-5	500	500	<LOQ	Hexythiazox	6.1900E-5	10	10	<LOQ	Spinetoram	2.3645E-2	10	10	<LOQ
Clofentezine	3.7100E-7	10	10	<LOQ	Imazalil	2.9500E-4	10	10	<LOQ	Spinosad	5.9903E-1	10	10	<LOQ
Clothianidin	3.9900E-4	25	25	<LOQ	Imidacloprid	1.5300E-4	10	10	<LOQ	Spirodiclofen	3.7377E+6	250	250	<LOQ
Coumaphos	9.8600E-5	10	10	<LOQ	Iprodione	1.0554E-1	500	500	<LOQ	Spiromesifen	3.2183E-1	3000	3000	<LOQ
Cyantraniliprole	6.0040E-3	10	10	<LOQ	Kinoprene	3.4000E+0	1250	1250	<LOQ	Spirotetramat	4.2760E-2	10	10	<LOQ
Cyfluthrin	2.8130E+1	200	200	<LOQ	Kresoxim Methyl	1.4500E-4	150	150	<LOQ	Spiroxamine	1.2172E+0	100	100	<LOQ
Cypermethrin	1.1900E-6	300	300	<LOQ	Lambda Cyhalothrin	1.1686E-1	250	250	<LOQ	Tebuconazole	1.4800E-14	10	10	<LOQ
Cyprodinil	1.1410E-3	10	10	<LOQ	Malathion	1.3300E-4	10	10	<LOQ	Tebufenozide	1.8121E-2	10	10	<LOQ
Daminozide	3.0408E-1	100	100	<LOQ	Metalaxyl	4.8600E-5	10	10	<LOQ	Teflubenzuron	1.6620E-2	25	25	<LOQ
Deltamethrin	4.9284E-1	500	500	<LOQ	Methiocarb	2.2810E-3	10	10	<LOQ	Tetrachlorvinphos	8.3913E-1	10	10	<LOQ
Diazinon	3.9100E-10	20	20	<LOQ	Methomyl	1.1500E-6	25	25	<LOQ	Tetramethrin	9.9200E-5	100	100	<LOQ
Dichlorvos	1.1406E+0	50	50	<LOQ	Methoprene	1.1485E+0	2000	2000	<LOQ	Thiabendazole	1.2510E-3	20	20	<LOQ
Dimethoate	2.8400E-6	10	10	<LOQ	methyl-Parathion	4.2400E+0	9.6	9.6	<LOQ	Thiacloprid	1.1200E-5	10	10	<LOQ
Dimethomorph	1.5700E-4	50	50	<LOQ	Mevinphos	4.4200E-5	25	25	<LOQ	Thiamethoxam	2.2500E-6	10	10	<LOQ
Dinotefuran	2.3697E-1	50	50	<LOQ	MGK-264	2.5880E-3	50	50	<LOQ	Thiophanate-methyl	2.2300E-4	50	50	<LOQ
Diuron	6.8620E-3	125	125	<LOQ	Myclobutanil	7.0006E-1	10	10	<LOQ	Trifloxystrobin	2.1700E-13	10	10	<LOQ

*Aixia Sun*  
Aixia Sun Lab Director/Principal Scientist  
D.H.Sc., M.Sc., B.Sc., MT (AAB)

Definitions are found on page 1

This report shall not be reproduced, without written approval, from ACS Laboratory. The results of this report relate only to the material or product analyzed. Test results are confidential unless explicitly waived otherwise. ACS Laboratory is accredited to the ISO/IEC 17025:2017 Standard. The tests and/or calibrations marked with an "\*" are not ISO/IEC 17025:2017 accredited test results.





**Certificate of Analysis**  
Compliance Test

**Client Information:**

<b>AMERICAN SOFTGELS INC</b> 100 STATION ST LOYALHANNA, PA 15661	Batch # 507001 Batch Date: 2025-10-15 Extracted From: Hemp	Test Reg State: Colorado	Production Facility: American Softgels, Inc. Production Date: 2025-10-15
Order # AME251015-010003 Order Date: 2025-10-15 Sample # AAHD638	Sampling Date: 2025-10-23 Lab Batch Date: 2025-10-23 Completion Date: 2025-10-29	Initial Gross Weight: 75.100 g Net Weight: 0.445 g	Number of Units: 1 Net Weight per Unit: 445.000 mg Sampling Method: MSP 7.3.1

**Potency 25 (LCUV) at Dry Weight**  
Specimen Weight: 101.980 mg

**Tested**  
SOP13.001 (LCUV)

Dilution Factor: 100.000

Analyte	Dilution (1:n)	LOD (mg/g)	LOQ (%)	Result (mg/g)	(%)	Analyte	Dilution (1:n)	LOD (mg/g)	LOQ (%)	Result (mg/g)	(%)
Delta-8 THC	10.000	2.60E-5	0.015	59.0	5.90	Delta-8 THC-O Acetate	10.000	2.70E-5	0.025	<LOQ	<LOQ
CBN	10.000	1.40E-5	0.015	0.400	0.0400	Delta-9 THC	10.000	1.30E-5	0.015	<LOQ	<LOQ
Delta-8 THCV	10.000	4.00E-5	0.015	0.370	0.0370	Delta-9 THC-O Acetate	10.000	7.70E-5	0.025	<LOQ	<LOQ
CBC	10.000	1.80E-5	0.015	<LOQ	<LOQ	Delta8-THCP	10.000	3.75E-4	0.015	<LOQ	<LOQ
CBCA	10.000	1.07E-4	0.015	<LOQ	<LOQ	Delta9-THCP	10.000	1.17E-5	0.012	<LOQ	<LOQ
CBD	10.000	5.40E-5	0.015	<LOQ	<LOQ	Exo-THC	10.000	2.30E-4	0.015	<LOQ	<LOQ
CBDA	10.000	1.00E-5	0.015	<LOQ	<LOQ	THCA-A	10.000	3.20E-5	0.015	<LOQ	<LOQ
CBDV	10.000	6.50E-5	0.015	<LOQ	<LOQ	THCB	10.000	1.80E-4	0.0163	<LOQ	<LOQ
CBDVA	10.000	1.40E-5	0.015	<LOQ	<LOQ	THCH	10.000	3.50E-4	0.0163	<LOQ	<LOQ
CBG	10.000	2.48E-4	0.015	<LOQ	<LOQ	THCV	10.000	7.00E-6	0.015	<LOQ	<LOQ
CBGA	10.000	8.00E-5	0.015	<LOQ	<LOQ	THCVA	10.000	4.70E-5	0.015	<LOQ	<LOQ
CBL	10.000	3.50E-5	0.015	<LOQ	<LOQ	Total Active CBD	10.000			<LOQ	<LOQ
CBNA	10.000	9.50E-5	0.015	<LOQ	<LOQ	Total Active THC	10.000			<LOQ	<LOQ
CBT	10.000	2.00E-4	0.015	<LOQ	<LOQ						

*Aixia Sun*  
Aixia Sun Lab Director/Principal Scientist  
D.H.Sc., M.Sc., B.Sc., MT (AAB)

Definitions are found on page 1

This report shall not be reproduced, without written approval, from ACS Laboratory. The results of this report relate only to the material or product analyzed. Test results are confidential unless explicitly waived otherwise. ACS Laboratory is accredited to the ISO/IEC 17025:2017 Standard. The tests and/or calibrations marked with an "\*" are not ISO/IEC 17025:2017 accredited test results.

